

# Anderson Township



*Overview of Anderson Township facilitated safety improvements around Forest Hills Schools, and safety awareness/education efforts*

*December 2023*

# Who Does What ?

- Anderson Township - 123 miles (mainly subdivision streets posted for 25 mph)

- Hamilton County - 73 miles of thru township roadways, such as Clough, Salem, Eight Mile, etc.




- Ohio Department of Transportation (ODOT) – 19.8 miles of state or U.S. highways in our community, such as SR 32 (Batavia Road), SR 125 (Beechmont Avenue), US 52 and I-275

**All agencies must follow Federal and State standards and guidelines (signage, roadway and sidewalk design, striping, etc.).**

Anderson Township

## Road Jurisdictions



-  ODOT (Ohio Department of Transportation)
-  Hamilton County
-  Anderson Township

Source: CAGIS  
Date: April, 2023



# Anderson High School



**Added school speed zones on Forest Road  
(none previously existed before mid 2000s)**



**Bike racks from OKI Regional Council of Governments**



# Turpin H.S. – Mercer Elementary



**Relocated crosswalk to school entrance with pedestrian activated crosswalk flashing sign and lighting**



**Ssidewalk connection along Knights of Columbus and school entrance**



# *Turpin H.S. – Mercer Elementary*



**Installed sidewalk on west side of Bartels from Newtown Road to Clough Pike and resurfaced Bartels Road (Hill) with non—skid material**



**Modified parking on Bartels Road (perpendicular to parallel) and widened roadway to accommodate PM traffic staging on northbound Bartels**



# *Turpin H.S. – Mercer Elementary*



**Pedestrian-activated crossing warning lights at crosswalk at Newtown Road and Stirrup Drive and sidewalks on Newtown Road to schools and Five Mile Trail area**



# *Nagel Middle School*



**Petitioned State of Ohio and Hamilton County to allow for extended speed zones on Nagel and State roads (beyond school boundary)**



# *Nagel Middle School*



**Pedestrian countdown signals at Nagel Road and State Avenue and relocation of crosswalk/ramp across Nagel driveway for sight distance and pedestrian safety**





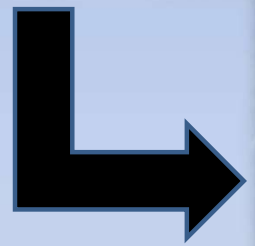
# *Nagel Middle School*



**Pedestrian countdown signals at Nagel Road and Clough Pike and additional crosswalk including sidewalk connection from Forestcrest to YMCA on Clough Pike**



# *Nagel Middle School*



**Connection from Sacred Heart to Nagel Middle School/Northport**



# Ayer Elementary School



**Introduced school speed zones on Forest Road (none previously existed before 2007)**



# Ayer Elementary School



**Improved visibility of crosswalks at the Forest Road intersections of Pamela Road and Nottingham Drive (where decorative treatment was tested)**



# Ayer Elementary School



**Sidewalks installed on Eight Mile Road and Woodruff Road to provide access to the existing school connection on Brownsboro, with pedestrian activated crossing warning lights at crosswalk at Eight Mile Road and Woodruff Road**



# Ayer Elementary School



**Sidewalks on Forest Road  
from Merritt Grove to  
Veterans Park**



**Sidewalks on Eight Mile Road from  
Beechmont to Forest Road**



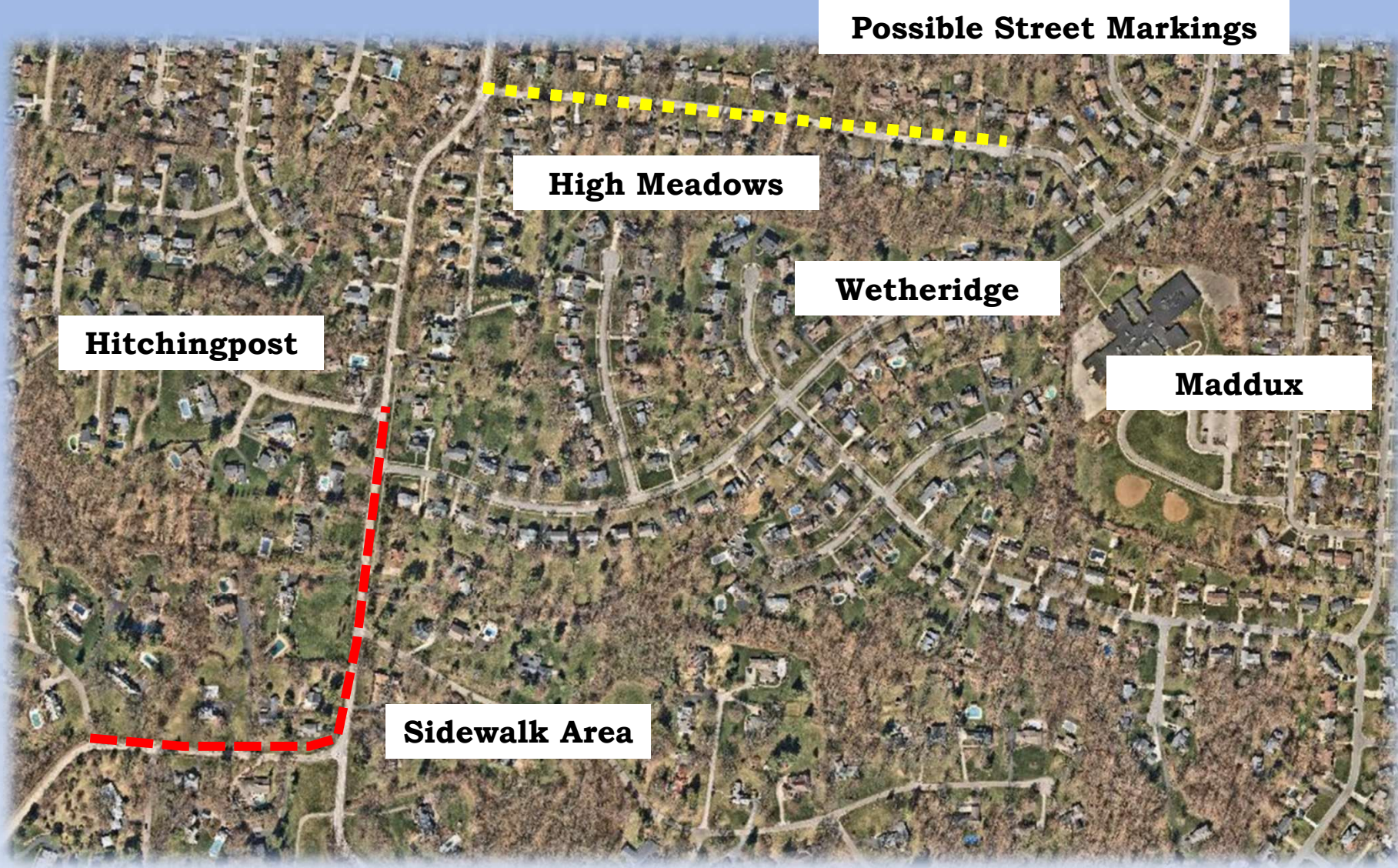
# Maddux Elementary School



**Replaced deteriorated sidewalk blocks around the school**



# Maddux Elementary School



**Design underway for sidewalks on Birney connecting nearby subdivisions to Wetheridge, including crosswalk near Hitchingpost and possible on-street pedestrian markings on High Meadows**





# Sherwood Elementary School



**Pedestrian-activated crossing warning lights at crosswalk of State Road and Half Circle Drive (library)**



# Sherwood Elementary School



**Replaced deteriorated sidewalk blocks and handicapped ramps around the school**



# Summit Elementary School



**Replaced deteriorated sidewalk blocks around the school and installed lower curb for possible future school related improvements along Northport**



# Summit Elementary School



**Pedestrian countdown signals at Eight Mile Road and Northport Drive**



# Summit Elementary School



**Sidewalks along Eight Mile Road between Beechmont Avenue and the Woods of Anderson subdivision**



# Summit Elementary School



**Added school zone and signage along Eight Mile Road in 2015 (not along school frontage, and sought approval from ODOT and Hamilton County)**



**Enhanced crosswalk Markings on newly resurfaced township-maintained roadways**



# *Wilson Elementary School*



**Expanded school speed zone further east on Little Dry Run and new sidewalk on south side to ensure school connection to Kimbee area, by obtaining ODOT and Hamilton County support**



**Launched pilot project with Wilson PTA to add crosswalk flags to two nearby crosswalks of county roadways**



# *Wilson Elementary School*



**New sidewalks on Little Dry Run / Hunley, from school to Royalgreen**



**Relocated crosswalk location on east drive of school at bus driveway**





# *Wilson Elementary School*



**New sidewalks on Wolfangel from Little Dry Run to Berrywood and/or Hampton Place**



# *Wilson Elementary School*



**New sidewalks on Lawyer & Little Dry Run to school boundary and added crosswalk at Wolfangel intersection to reduce roadway crossings for some students**



# *District Wide Improvements – Bike Racks*



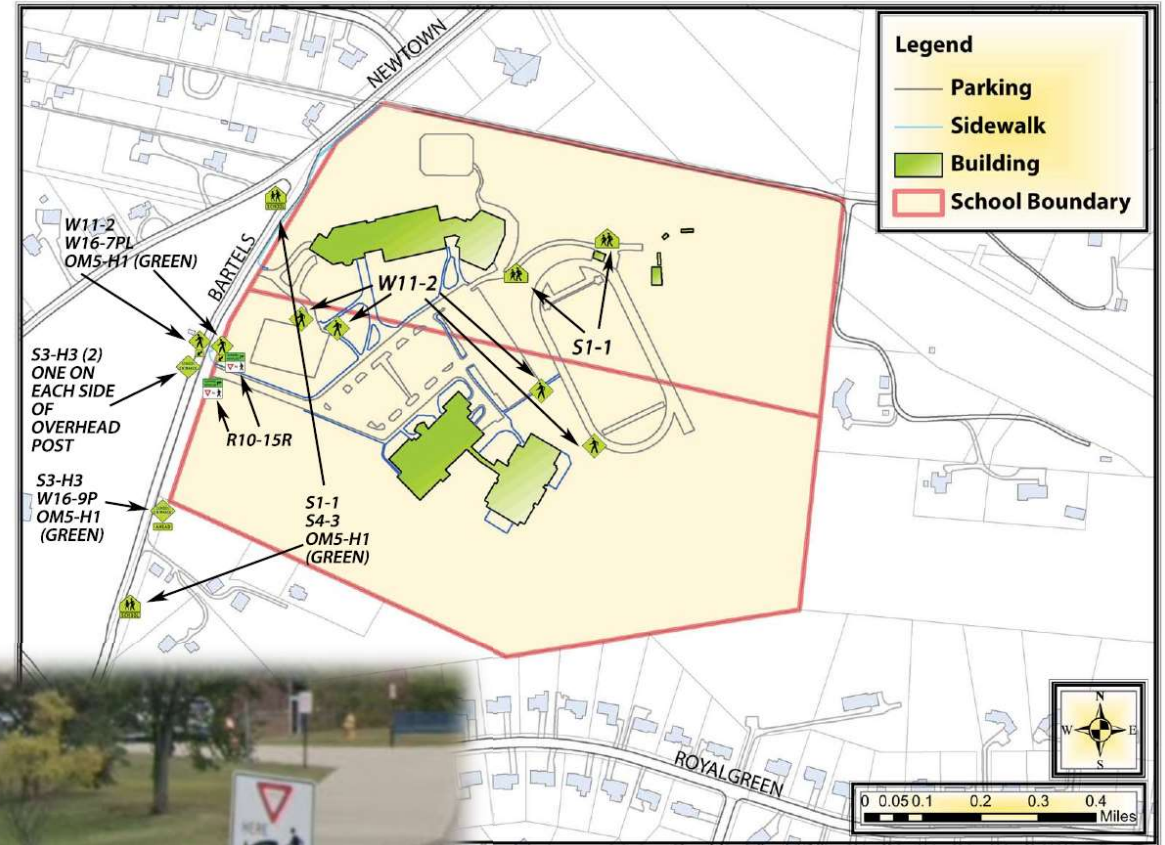
**Bike racks provided to participating schools**



# District-wide Improvements – Safety Signage



## Mercer Elementary/Turpin High School



**Introduced pedestrian safety signs on and around school properties**



# District-wide Improvements – Speed Trailer / Signs



## Effectiveness Report

For Hamilton County Sheriff on 7/29/2016 at 9:24 AM  
 Generated by Matt Rusk  
 Location: 8167 Woodruff, Woodruff, E  
 Time View: By Date (Total Volumes)  
 Speed Bin Range: 1 to 100  
 Notes:

Time of Day: 0:00 to 23:59  
 Dates: 7/13/2016 to 7/30/2016 (Su, M, T, W, Th, F, Sa)  
 Medium Risk Threshold: Speed Limit + 10  
 High Risk Threshold: Speed Limit + 20

Date	Speed Limit	Mode	Compliant		Low Risk		Medium Risk		High Risk		Sign Effectiveness % of Vehicles slowed by sign
			Average Final Speed	Change In Speed	Average Final Speed	Change In Speed	Average Final Speed	Change In Speed	Average Final Speed	Change In Speed	
7/13/2016	35	Speed Display	29.0	-1.5	38.2	0.0	47.3	-1.4	0.0	0.0	62.0 %
7/14/2016	35	Speed Display	25.4	-1.4	37.9	-0.2	48.1	-0.7	0.0	0.0	59.0 %
7/15/2016	35	Speed Display	29.9	-1.4	38.2	-0.2	48.8	-0.3	59.0	-1.0	63.0 %
7/16/2016	35	Speed Display	29.1	-1.3	38.2	0.0	47.6	-0.3	0.0	0.0	60.0 %
7/17/2016	35	Speed Display	29.8	-1.4	38.3	0.0	48.0	0.0	0.0	0.0	56.0 %
7/18/2016	35	Speed Display	26.2	-1.3	38.1	0.0	47.0	0.0	0.0	0.0	57.0 %
7/19/2016	35	Speed Display	26.4	-1.3	38.3	0.0	48.0	-0.2	57.0	0.0	61.0 %

**Utilize 2 township speed trailers and 6 portable signs for driver education and data collection**



# District-wide Improvements – Traffic Analysis



## Mercer Elementary Potential Traffic Changes



1. Add pavement between car parking area along Bartels and school entrance drive to provide continuous paved shoulder along Bartels where northbound traffic can pull over to stack and allow thru traffic to proceed on Bartels during congested periods (this currently occurs, in part, vehicles straddle white line).



2. Add dashed center lane striping in this area on new waiting loop (along practice field/playground area) so that cars stay to left and buses can pass to the right. Parents can be instructed, like they are today, to wait in left lane as this would be one-way traffic flow during afternoon pickup times.



3. Add two DO NOT ENTER signs in this area, with time frames (essentially both before and after school, for both Turpin and Mercer) when traffic should not enter this drive aisle, along Turpin High School.



Prepared by Anderson Township  
12/24/2023

4. NO IMAGE – Add signage on westbound Clough, and south bound Newtown Road, approaching Bartels alerting thru traffic to use Newtown Road during school times (and list them) – possibly could be even a sign that flashes during those periods.

**Township departments conducted observations of before and after traffic flow around various schools upon request, and provided recommendations**



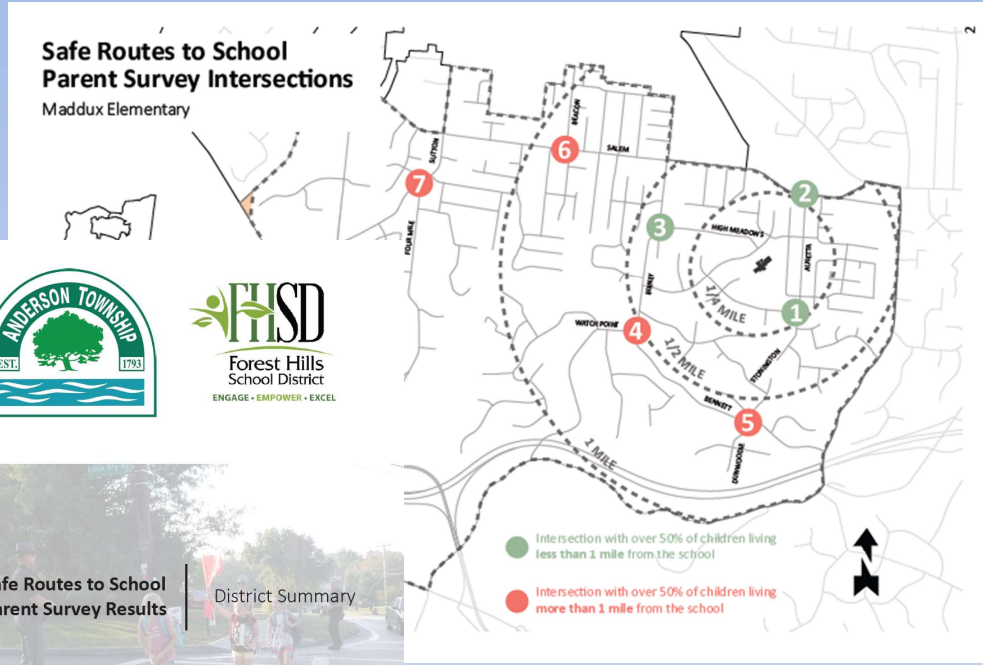
# District Wide Improvements – Walk to School Events



**Assisted with Walk to School Days for over 15 years at six school locations**



# District Wide – Parent Travel Data Survey

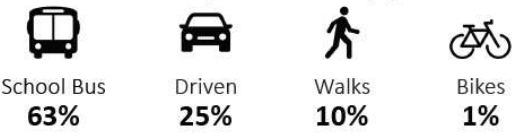


## District Summary

- 709 Respondents
- 48% live within 1 mile to the school  
26% within a 1/2 mile
- 48% of the children are in grades K-2

- Ayer Elementary - 115 Respondents
- Maddux Elementary - 100 Respondents
- Mercer Elementary - 123 Respondents
- Sherwood Elementary - 127 Respondents
- Summit Elementary - 84 Respondents
- Wilson Elementary - 160 Respondents

### Child's mode of transportation 3-5 days per week:

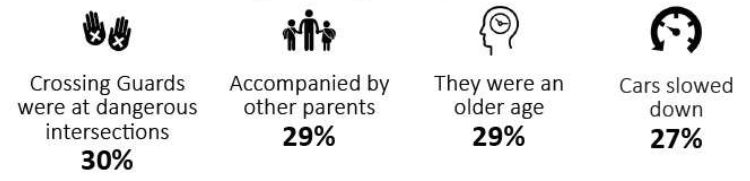


3-5 Day/Week		
Walks	72	10%
Bikes	10	1%
Driven	173	25%
Carpools	6	1%
Bus	440	63%
	701	

### Concerns with child walking or biking to school:



### Would allow child to begin walking or biking if..



## Comments

"I wish there were more community acceptance of walking to school. I'm astonished at the lack of crossing guards!!"

"There absolutely must be sidewalks all the way to school!"

"We walk and love it. It was absolutely a selling point of our house. But I hate to see fellow parents speeding and ignoring stop signs constantly. It's a huge problem."

"We've been letting my daughter walk to school more often this year, and it's been so good for her confidence level while at school. She has become a more engaged student."

**In 2019, with support of Forest Hills schools, township issued parent travel survey to better understand travel patterns and parent suggestions for each elementary school – data available for each school, and by age level and geography**





# District Wide – Elementary Walk Audits

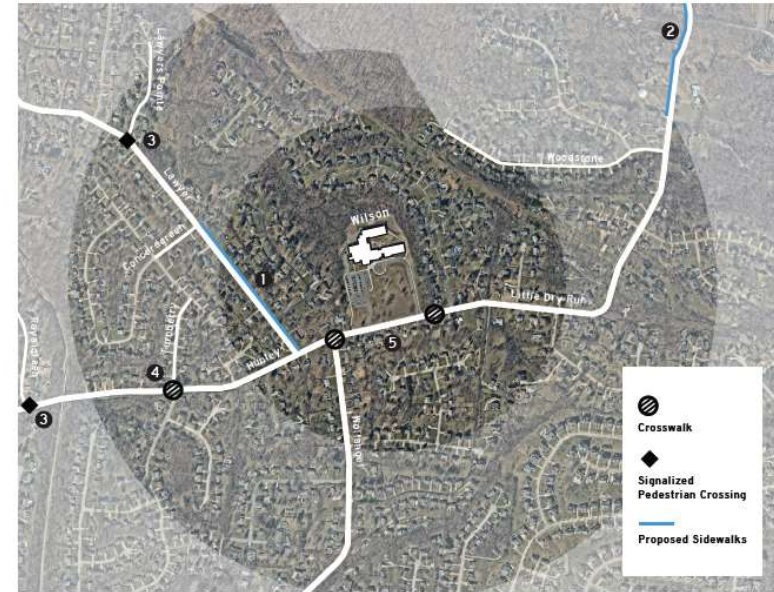
## Summit Walk Audit Summary

1. Add crossing guards at Northport/Hilltree.
2. Add textured/patterned crosswalks at Eight Mile/Northport, Northport/Hilltree, and Hilltree/Bethany.
3. Install ramps at Northport/Pinebluff.
4. Sidewalk connections on Holiday Hills from Eight Mile to existing sidewalk.



## Wilson Walk Audit Summary

1. Sidewalk connections on Lawyer from Concordgreen to Little Dry Run/Hunley.
2. Sidewalk expansion on Little Dry Run from Woodstone to Bridle.
3. Add signage and signalized pedestrian crossings on Lawyer at the intersection of Lawyer Pointe and Hunley at the intersection of Royalgreen.
4. Crosswalk installation at Hunley/Turnberry.
5. Add textured/patterned crosswalks at Wolfangel/Little Dry Run and Little Dry Run/Wilson's east drive entrance.



**With parent travel surveys information, volunteer members of the Township's Transportation Advisory Committee and staff conducted walk audits identifying projects around each elementary school – this information was incorporated into the Anderson Trails Plan**



# District Wide – Driver Education

Anderson Township, Ohio - Government  
August 15

### School Bus Safety Reminder

As area schools have begun to head back following their summer breaks, including Forest Hills Schools who starts later this week, a reminder to motorists about the rules regarding when to stop, and not stop, for a school bus.

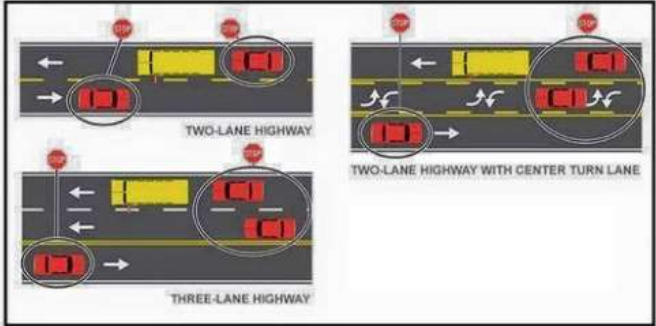
For a Two Lane Road, Two Lane Road with Center Turn Lane (such as a portion of Clough Pike), or Three Lane Road

- All traffic must stop for a school bus no matter which direction it's traveling. Traffic must stop at least 10 feet away from the school bus, whether coming from its front or rear.

Roads with Four or More Lanes

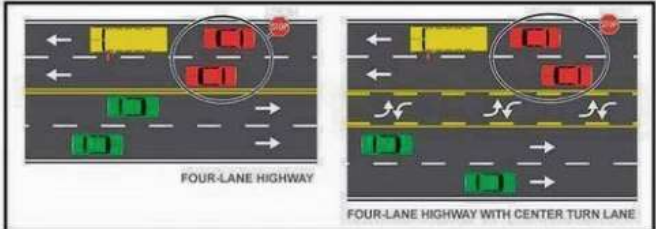
- Only traffic moving in the same direction as the bus must stop when the school bus stops to release passengers. Traffic coming from the opposite direction doesn't have to stop in these instances. To facilitate this law, children are dropped off on the same side of the road as their residences, so they won't have to cross the street.

**On a road with fewer than four lanes, all traffic approaching a stopped school bus from either direction must stop at least 10 feet from the front or rear of the bus and remain stopped until the bus begins to move or the bus driver signals motorists to proceed.**



**Two-Lane Highway**  
**Two-Lane Highway with Center Turn Lane**  
**Three-Lane Highway**

**If the bus is stopped on a street with four or more lanes, only traffic proceeding in the same direction as the bus must stop.**



**Four-Lane Highway**  
**Four-Lane Highway with Center Turn Lane**

Anderson Township, Ohio - Government  
August 16

### School Starts at Forest Hills!

The backpacks are packed ... it's back to school time at Forest Hills and at many other area schools! Be careful tomorrow morning during your commute as children will be back out on the streets at bus stops and on their walk or bike ride to school. Forest Hills "phases in" students tomorrow and Friday.

Motorists, a reminder of the speed zones times around school arrival and dismissal times. The hours schools are in session are as follows: High schools - 8 a.m. to 2:40 p.m.; Nagel Middle School 8:30 a.m. to 3:15 p.m.; and elementary schools - 9:15 a.m. to 3:45 p.m.

Have a great school year students, parents and teachers/staff and thanks for all your efforts!



See insights

11

Like Comment

Anderson Township, Ohio - Government  
August 17


### Off to School ... 1930s

Over 90 years ago, in 1929, the local school board established bus service to bring students from the entire township to a new central school building at the corner of Beechmont Avenue and Forest Road. Children ages first grade through high school rode the same bus.

Today, the Forest Hills Local School District operates one of the largest transportation systems in the area with a 58 bus routes making 292 individual runs each school day to over 30 public and private schools.

School starts this morning at Forest Hills for the 2023-2024 school year. Please keep an eye out for school buses on the road.

Photo from the Anderson Township Historical Society.



See insights

25

1 comment 4 shares

**Anderson Insights Newsletter and Facebook posts to increase driver education/awareness around schools and buses**



# *District Wide – History to Schools Program*



**Facilitated bicycle education annually to all 2<sup>nd</sup> grade students with History to Schools program**



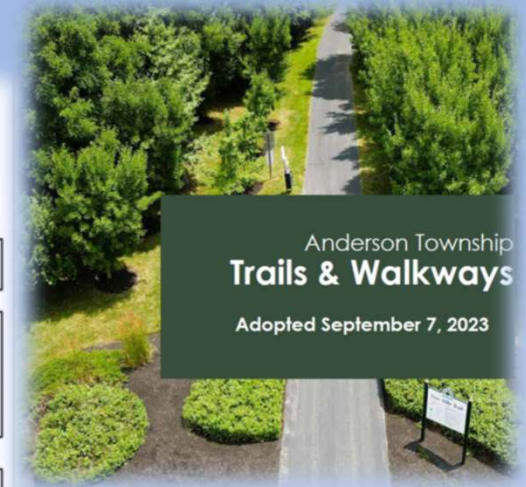
# ... and continues in the future

## Project Implementation 2023-2028



Legend:

- Sidewalk Projects
  - Crosswalk Projects
  - Corridor Projects
  - Stripping/Street Marking Projects
  - Natural Trail Projects
- \*All projects in the Lay Out/Design In House go to the Build stage the next year



**Anderson Trails Plan, updated in 2023, expanded into new areas (pavement markings, crosswalks, etc.) along with implementation timeline and several millions in safety improvements**



# Anderson Township



***Thank You Partners, including ...***

***Forest Hills School District, Hamilton County Engineer's Office,  
Hamilton County Sheriff's Office, Ohio Department of  
Transportation, OKI Regional Council of Governments, and  
private property owners***